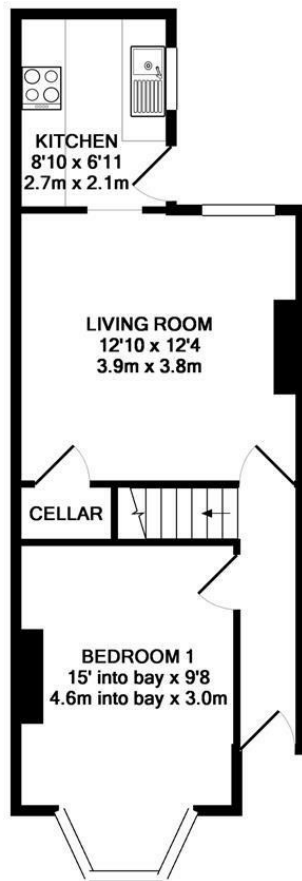




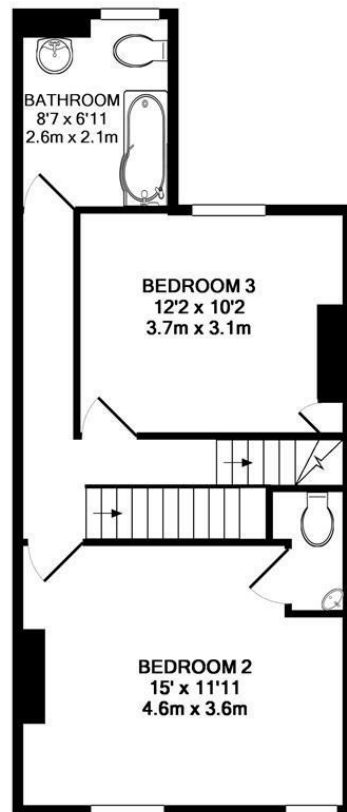
5 Bed  
House - Terraced  
located in

£434 PCM

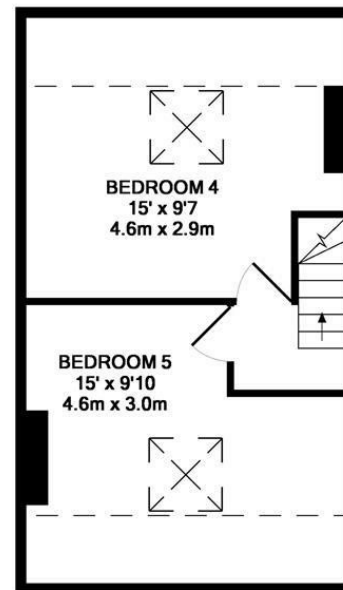




GROUND FLOOR



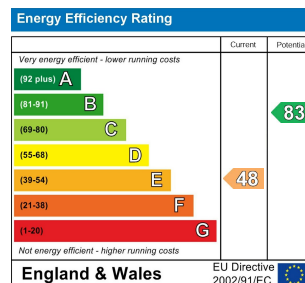
1ST FLOOR



2ND FLOOR

TOTAL APPROX. FLOOR AREA 1302 SQ.FT. (121.0 SQ.M.)

Whilst every attempt has been made to ensure the accuracy of the floor plan contained here, measurements of doors, windows, rooms and any other items are approximate and no responsibility is taken for any error, omission, or mis-statement. This plan is for illustrative purposes only and should be used as such by any prospective purchaser. The services, systems and appliances shown have not been tested and no guarantee as to their operability or efficiency can be given  
Made with Metropix ©2018



## DIRECTIONS

## CONTACT

8-10 Broomhall Road  
Sheffield  
S10 2DR

E: [info@taptonestates.co.uk](mailto:info@taptonestates.co.uk)  
T: 0114 268 3325  
[www.taptonestates.co.uk](http://www.taptonestates.co.uk)

